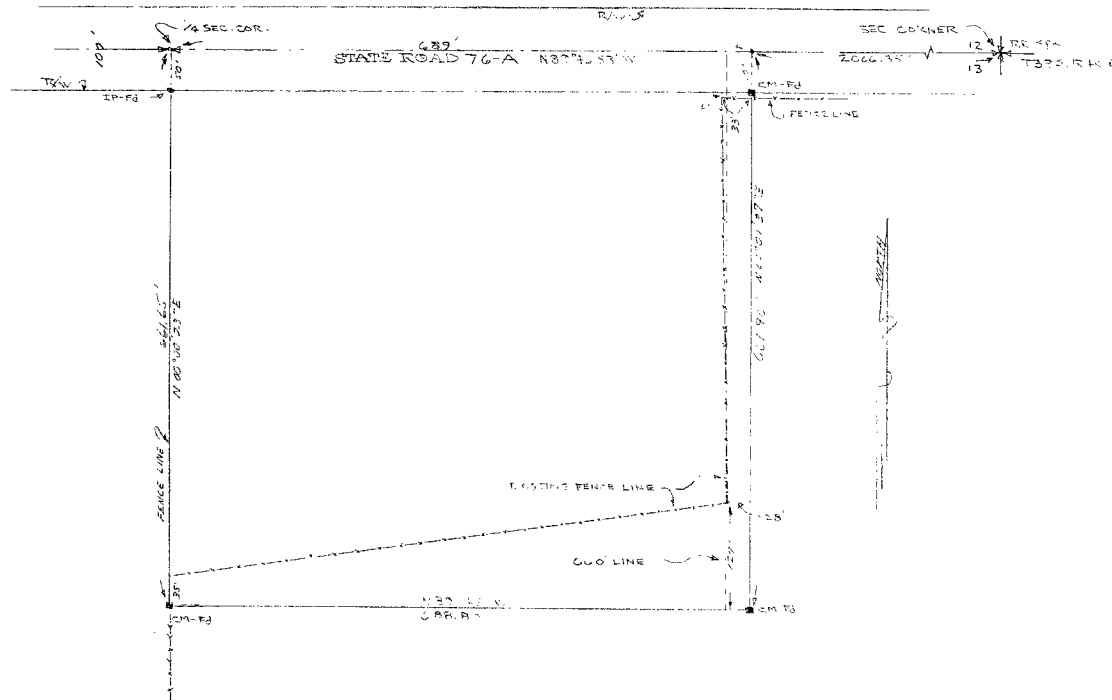


**SURVEY MAP**

SHOWING THE NW 1/4 OF TRACT 2, SEC. 13, TROPICAL FRUIT FARMS, T42N R3E S4, PUBLIC RECORDS OF PALM BEACH COUNTY, FLORIDA, NOW MARTIN COUNTY, FLORIDA.

NOV 10, 1907

SCALE 1"=100'



I HEREBY CERTIFY THAT THE ATTACHED MAP IS A TRUE AND CORRECT REPRESENTATION OF A SURVEY MADE BY ME AND THAT SAID SURVEY WAS ACCURATE TO THE BEST OF MY KNOWLEDGE AND BELIEF.

*Ranville E. Farris*  
REG. PROFESSIONAL SURV. NO. 1960

RANVILLE E. FARRIS,  
SURVEYOR  
STATE OF FLORIDA

J. D. BARTON

NOV 10 1907

161